

PLACING AN IMAGE OVER A VIDEO

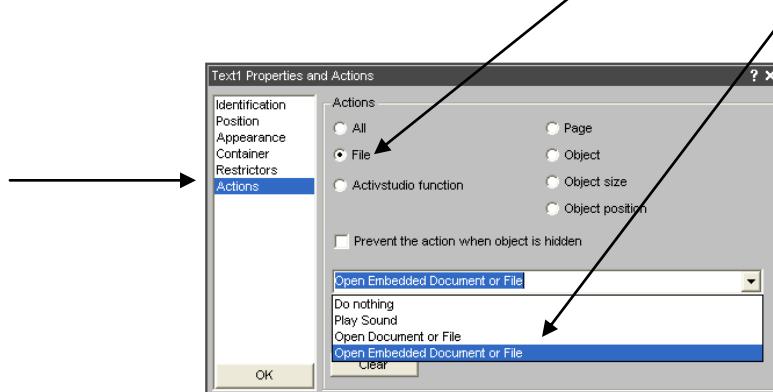
1. Insert the image on the same flipchart page as where the video will be placed.
2. Turn off the **Enable Actions** button by clicking on the icon.



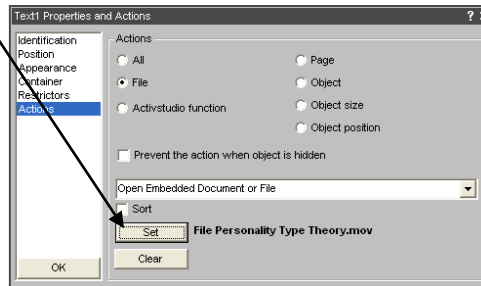
3. **Double click** on the **Image**. In the **Object Edit** textbox, click on the **Properties** button.



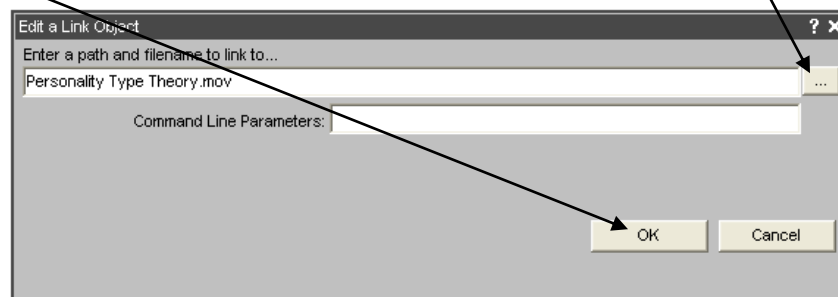
4. In the **Properties and Actions Menu**, click on **Actions**. Click on the radio button next to **File**. From the drop-down menu click on **Open Embedded Document or File**.



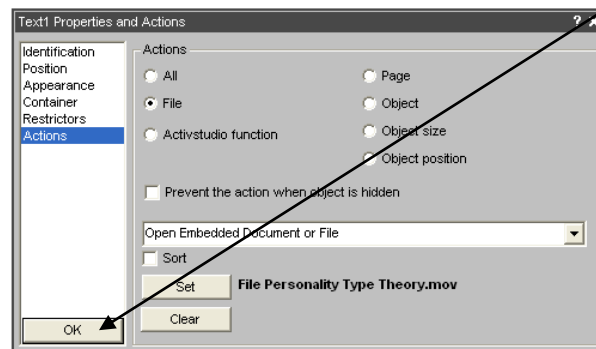
5. Click on **Set**.



6. In the **Edit a Link Object** textbox, **click** on the button to locate the video to be played when the image is clicked. **Click OK** to close the textbox.



7. In the **Properties and Actions** textbox, **click OK**.



8. Turn on the **Enable Actions** button by **clicking** on the icon.



9. Click on the **Image** to make the image disappear and to make the video play.